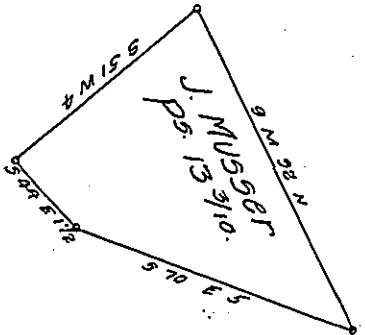


York County Shore.



Lancaster County Shore.

A Draught of Stream Island situate in the river Susquehanna in Manor township Lancaster County opposite on the Lancaster side, to lands of the heirs of Philip Sowers and on the York side to lands of Mary Musser and lying about one hundred and fifty perches from the Lancaster Shore & about one hundred perches from Walnut Island containing thirteen perches and three tenths. Strict measure surveyed in pursuance of a warrant dated 2nd day of August A. D. 1815 granted to Jacob Musser.

Pr. Jacob Hibshman D.S.

To Jacob Spangler Esqr.
Surveyor General }

IN TESTIMONY that the above is a copy of the original remaining on file in the Department of Internal Affairs of Pennsylvania, made conformably to an Act of Assembly approved the 16th day of February, 1833, I have hereunto set my Hand and caused the Seal of said Department to be affixed at Harrisburg, this thirtieth day of November 1907.

Henry Woods
Secretary of Internal Affairs.